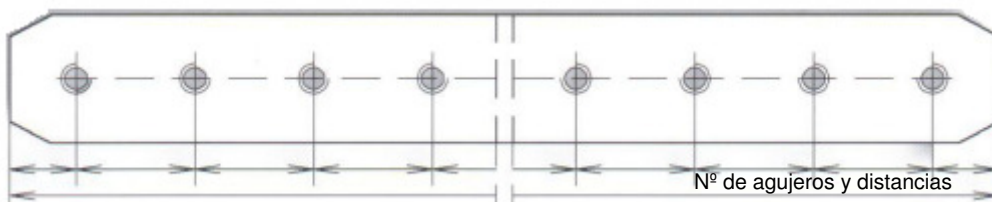
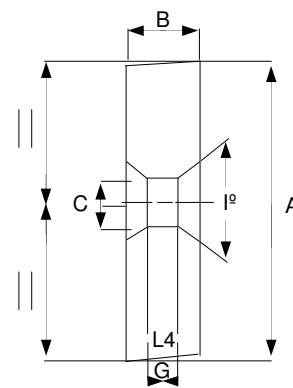
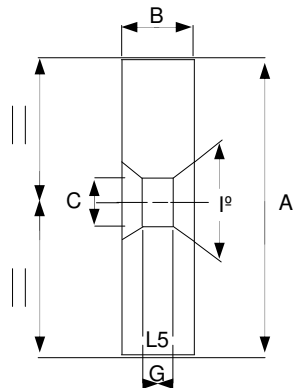
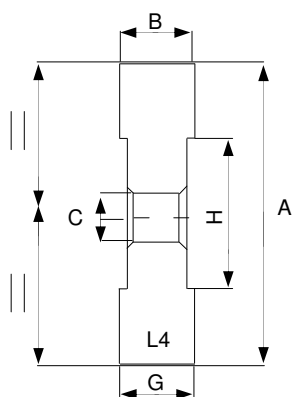
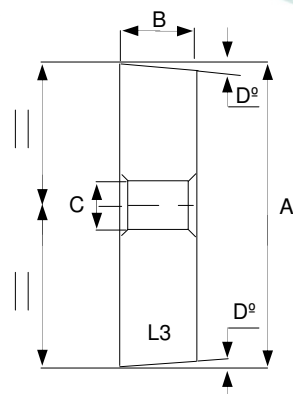
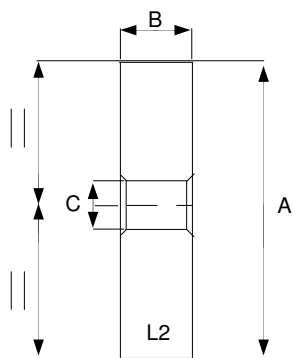
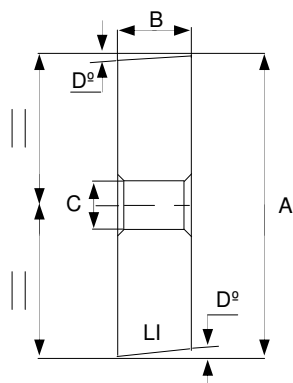
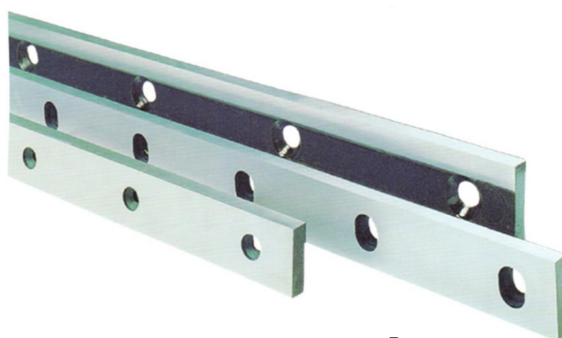


# CUCHILLAS PARA CIZALLAS - GUILLOTINAS

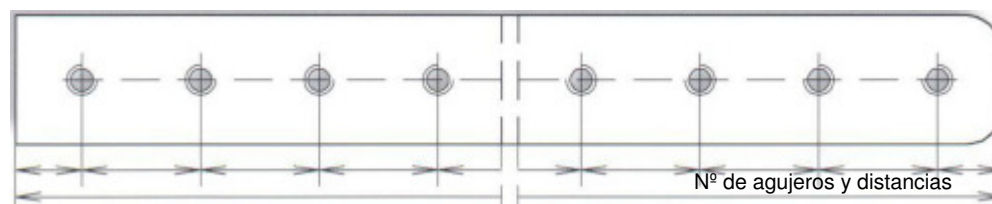
## Para solicitar oferta nos deben indicar

El tipo de material que van a cortar, tanto en calidad como en espesores.  
 Longitud de las cuchillas.  
 N° de amarres y tipo de amarres.

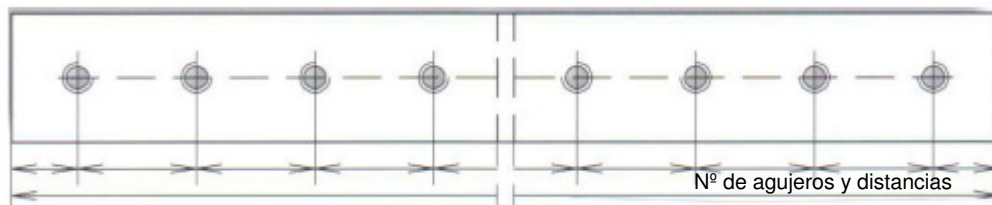
Ejemplos de máquinas en las que podemos montar las cuchillas:  
 Geka, Gairu, Mebusa, Peddinghaus, Ajial, Durma, Arrieta, Kaltenbach, Casanova, Loiresafe, Ficep.



A



B



C